

Acme Paper & Supply Company

Foodservice Product Guide



CURBSIDE, CARRYOUT, & DELIVERY RESTAURANT SERVICE

Some restaurants have chosen to increase their meals-to-go programs in the wake of the Coronavirus pandemic. Whether patrons are opting for delivery or curbside pickup, Acme Paper has the packaging options to ensure your food arrives to the customer safe and secure.

RESTAURANTS OFFERING TAKEOUT & DELIVERY





CARRYOUT / DELIVERY

CLEAR LID HINGED CLAMSHELL CONTAINERS

These recyclable containers have a clear, vented lid with anti-fog technology, and can withstand temperatures up to 230°F . Stackable with a secure snap closure.

Various sizes and configurations available.

3 COMPARTMENT BLACK HINGED CLAMSHELL

Item #901610-100/CS

1 COMPARTMENT BLACK

Item #323123 - xx/CS

1 COMPARTMENT HINGED CLAMSHELL 6x6

Item #323131 - xxx/CS

MICROWAVEABLE HINGED CLAMSHELL

Item #903902

1 COMPARTMENT CLAMSHELL 9x9

Item #323124

1 COMPARTMENT 9x9 HINGED CONTAINER

Item #323138

3 COMPARTMENT HINGED 9x9 CONTAINER

Item #323142

3 COMPARTMENT BLACK

Item #323122

1 COMPARTMENT HINGED CLAMSHELL

Item #323121





CARRYOUT / DELIVERY

MICROWAVEABLE CONTAINERS – SEPARATE BASE/LID

These microwavable containers include unique stacking features and allows the products to double stack and inter stack together. Perfectly sized to fit into standard small and large carryout bags, the containers won't slide and spill due to their deep snap grooves permitting the PET lids to close securely with an audible snap, but easily open with large tabs. Reusable & Recyclable.

8OZ BLACK RECTANGLE CONTAINER

Item #121177 - 400/CS

12OZ BLACK RECTANGLE CONTAINER

Item #121171 - 400/CS

16OZ BLACK RECTANGLE CONTAINER

Item #121172 - 400/CS

24OZ BLACK RECTANGLE CONTAINER

Item #121173 - 200/CS

32OZ BLACK RECTANGLE CONTAINER

Item #121174 - 200/CS

40OZ BLACK RECTANGLE CONTAINER

Item #121180 - 200/CS

9X9 BLACK 1 COMPARTMENT CONTAINER

Item #323003 - 300/CS

Item #323002 –lid – 300/CS



CLEAR LID FITS 12-16OZ RECTANGLE CONT - NO VENT

Item #121175 - 400/CS

CLEAR LID FITS 24-32OZ RECTANGLE CONT - NO VENT

Item #121176 - 200/CS

CLEAR LID FITS 40OZ RECTANGLE CONT - NO VENT

Item #121181 - 200/CS





CARRYOUT / DELIVERY

ALUMINUM PANS/ CONTAINERS

Premium, black & gold, smooth wall containers are the perfect package for restaurant take-out – a perfect home meal replacement container. You can cook or reheat your meal in the container and then serve directly from the container for a home cooked presentation. A product can go from freezer to oven (conventional or microwave) to table. Both pan & lid are recyclable and have a stacking feature.

BLACK & GOLD ENTRÉE W/DOME LID

Item #374028 - 100/CS

BLACK/GOLD MEDIUM ENTREE PAN W/LID

Item #901590 - 50EA/CS

BLACK/GOLD MEDIUM CONTAINER

Item #901724 - BULK PACK

16OZ BLACK/GOLD CONTAINER W/DOME LID

Item #370075 - 100/CS

BLACK/GOLD SMALL ENTREE CONTAINER

Item #901723 - 300/cs





CARRYOUT / DELIVERY

ALUMINUM STEAM PANS/ CONTAINERS

Full, half and 1/3 steam table pans are available in shallow, medium, and deep varieties, the half steam table is also available in extra deep. These steam table pans offer increased strength which provides increased holding power.. Aluminum foil lids and Plastic high and low dome lids available.

HANDI-MAX FULL STEAM PAN DEEP
Item #372025-50/CS



HANDI-MAX HALF STEAM PAN DEEP
Item #372026 - 100/CS

FULL SIZE STEAM PAN DEEP
Item #372019 - 50/CS



HALF SIZE DEEP STEAM PAN
Item #372050 -100/CS

1/3 TRUFIT STEAM PAN
Item #370320-200/CS

HALF STEAM LID FULL CURL
Item #372041 - 100/CS



FULL STEAM LID W/ FULL CURL
Item #372042 - 50/CS

1/3 FOIL STEAM PAN LID FULL CURL
Item #372043 - 200/CS





CARRYOUT / DELIVERY

ALUMINUM OBLONG CONTAINERS

Oblong pans are available in a range of sizes with varying depths. Oblong pans are popular and affordable solutions for all carry-out applications, including a wide variety of food service, bakery, and restaurant needs.

Laminated board lids and plastic dome lids are available for all of these pans as well.

1LB OBLONG PAN

Item #372065 - 1M/CS



1.5LB OBLONG PAN

Item #903913 - 500/CS

2-1/4LB OBLONG

Item #370785 - 500/CS



3LB OBLONG CONTAINER

Item #374046 - 250/CS

FOIL BOARD LID FITS 1LB OBLONG

Item #377008 - 1M/CS



4LB OBLONG DOME LID

Item #371753 - 250/CS





CARRYOUT / DELIVERY

ALUMINUM ROUND CONTAINERS

Round pans are available in 7", 8", and 9" sizes. Laminated board lids and plastic dome lids are available for most applications. Round pans are great for food service distribution or for use in carry-out, restaurants, and catering.

7" ALUM ROUND PAN
Item #373047 - 500/CS



8" ROUND ALUM PAN
Item #371170 - 500/CS



9" ROUND ALUMINUM CONTAINER
Item #372046 - 500/CS

7" PLASTIC DOME LID
Item #372147 - 500 CS

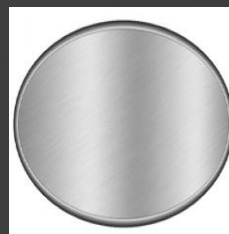


8" DOME LID
Item #371100 - 500/CS



9" PLASTIC DOME LID FITS 372046
Item #372146 - 500/CS

7" ROUND BOARD LID
Item #371172 - 500/CS



9" FOIL BOARD LID
Item #972146 - 500/CS



CARRYOUT / DELIVERY

DELI CONTAINERS –TAMPER EVIDENT

Using tamper-evident lids on food containers increases consumer trust and confidence in your product. Reusable and recyclable.

8OZ PET SQUARE DELI TAMPER EVIDENT CONTAINER
Item #123400 - 500/CS

12OZ PET SQUARE DELI TAMPER EVIDENT CONTAINER
Item #123401 - 500/CS

16OZ PET SQUARE DELI TAMPER EVIDENT CONTAINER
Item #123402 - 500/CS

24OZ PET SQUARE DELI TAMPER EVIDENT CONTAINER
Item #123403 - 500/CS

32OZ PET SQUARE DELI TAMPER EVIDENT CONTAINER
Item #123404 - 500/CS

PET 8-32OZ TAMPER EVIDENT LID FOR CLEAR SQUARE DELI
Item #123405- 500/CASE



DELI CONTAINERS –TAMPER RESISTANT

3-COMPARTMENT BENTO BOX - 26OZ LARGE
CLEAR TRAY
Item #088408 - 300/CS

3-COMPARTMENT BENTO BOX CLEAR FLAT LID
Item #088407 - 300/CS





CARRYOUT / DELIVERY

DELI CONTAINERS – HINGED, TAMPER EVIDENT

These Hinged Lid Tamper Evident Containers feature a patented security button tab feature which inhibits tampering, ensures quality and eliminates the need for shrink bands and wrap labels. The tight rim seal and audible click of the security button tab promise a leak-resistant experience.

100% post-consumer recycled PET

8OZ CLEAR HINGE TAMPER EVIDENT CONTAINER

Item # 123070 - 240 CS

16OZ CLEAR HINGE TAMPER EVIDENT CONTAINER

Item #123172 - 240/CS

20OZ CLEAR HINGE TAMPER EVIDENT CONTAINER W/LID

Item #123077 - 200/CS

24oz CLEAR HINGE TAMPER EVIDENTCONTAINER W/LID

Item #123073 - 200/CS

32OZ CLEAR HINGE TAMPER EVIDENT CONTAINER W/LID

Item #123074 - 200/CS

64OZ CLEAR HINGE CONTAINER W/LID TAMPER EVIDENT

Item #123276





CARRYOUT / DELIVERY

DELI CONTAINERS

- Containers made from 100% Recyclable and Reusable #6 PP polypropylene plastic.
- Containers are translucent for product visibility.
- Lids create a tight seal to help preserve freshness and prevent leakage.
- Microwaveable for reheating.
- Freezer Safe for food storage.
- Stackable, Dishwasher Safe for Consumer reuse.



8OZ DELITAINER COMBO PK

Item #100095 - 240/CS

16oz COMBO MICROWAVEABLE DELITAINER

Item #902074 - 240/CS

32oz CLEAR DELITAINER

Item #100083 - 480/CS

32oz DELITAINER COMBO

Item #100096 - 240/cs

DELI LID FITS 8,12,16,24, 32oz CONTAINER

Item #100085 - 480/CS





CARRYOUT / DELIVERY

COMPOSTABLE CONTAINERS

Sturdy, biodegradable carry out containers for restaurants or your event. Great for takeout food orders. 100% Compostable to help save the environment.

20oz RECTANGLE SUGARCANE CONTAINER

Item #088334 - 300/CS



30oz RECTANGLE SUGARCANE CONTAINER

Item #088350 - 300/CS

48oz SQUARE (8X8) SUGARCANE CONTAINER

Item #088330 - 300/CS



32oz SQUARE SUGARCANE CONTAINER

Item #088355 - 300/CS

RECTANGLE LID FOR 20-30OZ SUGARCANE CONTAINERS

Item #088337 - 300/CS

FLAT LID FOR 32- 48OZ SQUARE CONTAINER

Item #088336 - 300/CS





CARRYOUT / DELIVERY

BOWLS

FLAT PET LID FOR BOWL CHESAPEAKE

Item #152158 - 300/CS

DOME PET LID FOR ROUND BOWL CHESAPEAKE

Item #152159 - 300/CS

32OZ COMPOSTABLE FIBER BOWL -
CHESAPEAKE

Item #152157 - 500/CS

16OZ SQUARE PP LID FOR PULP BOWLS

Item #088390 - 300/CS

24/28/32 SQUARE PP LID FOR PULP BOWLS

Item #088386 - 300/CS

RECTANGLE LID FOR 20-30OZ CONTAINER

Item #088338 - 300/CS

16oz SQUARE LID FOR PULP LAMINATED
CONTAINER

Item #088419 - 150/CS

24OZ PET ROSE BOWL COMBO W/ DOME LID

Item #120550 - 150/CS

32OZ PET ROSE BOWL COMBO WITH DOME LID

Item #120551 - 150/CS

48OZ PET ROSE BOWL COMBO WITH DOME LID

Item #120552 - 150/CS





CARRYOUT / DELIVERY

CONTAINERS – SOUFFLE CUPS

Perfect for packaging sauces, dips, and dressings To Go!

2oz PLA SOUFFLE CUP -COMPOSTABLE

Item #030817 - 2000/CS

2oz PLA SOUFFLE LID - COMPOSTABLE

Item #030818 - 2000/CS

4oz PLA SOUFFLE CUP- COMPOSTABLE

Item #030819 - 2000/CS

1OZ CLEAR POLYPROPYLENE SOUFFLE CUP- CHESAPEAKE

Item #031520 - 2500/CS

1.5oz CLEAR POLYPROPYLENE SOUFFLE CUP - CHESAPEAKE

Item #031521 - 2500/CS

2OZ CLEAR POLYPROPYLENE SOUFFLE - CHESAPEAKE

Item #031522 - 2500/CS

3.25OZ CLEAR POLYPROPYLENE SOUFFLE - CHESAPEAKE

Item #031523 2500/CS

4OZ CLEAR POLYPROPYLENE SOUFFLE - CHESAPEAKE

Item #031524 - 2500/CS

5OZ CLEAR POLYPROPYLENE SOUFFLE – CHESAPEAKE

Item #031525 - 2500/CS

2OZ BLACK POLYPROPYLENE SOUFFLE - CHESAPEAKE

Item #031526 - 2500/CS

3.25OZ BLACK POLYPROPYLENE SOUFFLE - CHESAPEAKE

Item #031527 - 2500/CS





CARRYOUT / DELIVERY

TAMPER EVIDENT LABELS

1" x 3" PERMANENT SECURE IT LABELS

This is a great product to show that the curbside pickup, or delivery meals have not been tampered with.

These labels can be used to secure paper bags or food containers that are not equipped with tamper evident lids.

Item #913213 -2 Rolls/ 500 per roll



During the COVID-19 pandemic, food delivery has increased and with it the risk of pilferage and contamination.

A U.S. Foods survey results showed that 85% of customers would like restaurants to use tamper-evident labels to protect their food.



CARRYOUT / DELIVERY

CUTLERY KITS

MEDIUM WEIGHT POLYPROPYLENE WHITE CUTLERY KIT

(Fork, Knife, Teaspoon, Napkin)

Item #130421 – 250/CS



MEDIUM WEIGHT POLYPROPYLENE KIT

(FORK, 8X10 NAPKIN)

Item #130214 - 1M/CS



HEAVY WEIGHT POLYPROPYLENE KIT - BLACK

(Fork, Knife, Napkin)

Item #132296 - 250/CS

HEAVY WEIGHT POLYSTYRENE CUTLERY KIT - BLACK

(Fork, Knife, Teaspoon, Napkin)

Item #130476 - 250/CS





CARRYOUT / DELIVERY

CUTLERY KITS

SILVER ROLL CUTLERY KIT

(Fork, Knife, Spoon, Napkin w/Silver Band)

Item #908117 - 100CS

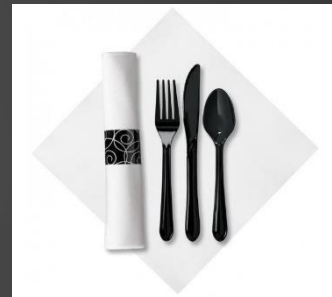


CATERWRAP DISHTOWEL - RED/WHITE EARTHWISE CUT

Item #430757 - 100/CS

CATERWRAP W/BLACK CUTLERY - WHITE NAPKIN, BLACK BAND W/ SILVER SWIRL

Item #430742 - 100/CS



SILVER CUTLERY KIT

(Fork, Knife, Spoon, Salt & Pepper, Napkin)

Item #130205 - 100/CS

SILVER ROLL CUTLERY

(Fork, Knife, Napkin w/Silver Band)

Item #080131 - 100/CS





CARRYOUT / DELIVERY

DRINKWARE

12OZ PET CLEAR CUP -(14OZ FLUSH)
Item #100344 - 1M/CS

16OZ CLEAR PET CUP
Item #100345 - 1M/CS

20OZ CLEAR PET CUP
Item #100346 - 1M/CS

24OZ PET CLEAR CUP
Item #100347 - 600/CS

12/14oz TALL PET CUP
Item #100349 - 1M/CS

32OZ PET CLEAR CUP -CHESAPEAKE
Item #100356 - 300/CS

PET FLAT LID W/ STRAW SLOT – FITS 12-24oz
Item #100354 - 10/100/CS

PET SIP LID – FITS 12-24oz
Item #100369 - 20/50/CS

NO HOLE DOME PET LID CHESAPEAKE – FITS 12/14oz TALL
Item #100361 - 1M/CS



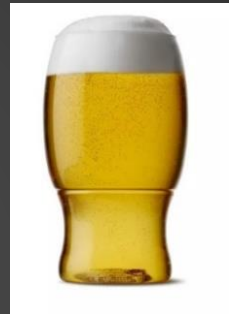


CARRYOUT / DELIVERY

DRINKWARE

Upscale disposable glasses for wine, beer, champagne, and cocktails. Always 100% recyclable, BPA-free, and fully shatterproof, they're perfectly convenient for every occasion

TOSSWARE 18oz CLEAR PINT
Item #120264 - 48/CS



TOSSWARE 12oz STEMLESS TUMBLER JR
Item #120266 - 48/CS

TOSSWARE 9oz STEMLESS FLUTE
Item #121263 - 252/CS

TOSSWARE 14oz STEMLESS WINE GLASS
Item #121267 - 252/CS



LID FOR 12oz, 14oz, AND 18oz TOSSWARE
Item #121270



LID FOR 9oz TOSSWARE
Item #121272





CARRYOUT / DELIVERY

INDIVIDUAL BEVERAGE CONTAINERS

PLASTIC JUICE BOTTLE TAMPER EVIDENT LID
Item #989355 - 400/bag

16oz CLEAR PLASTIC JUICE BOTTLES - PINT PET
Item #989690 - 135/CS

12oz CLEAR PLASTIC JUICE BOTTLES - PET SQUARE
Item #989698 - 160/CS

16oz JUICE BOTTLES - PINT
Item #989715 - 240/CS





CARRYOUT / DELIVERY

BULK BEVERAGE CONTAINERS

Holding coffee, tea, or **the beverage of your choice**, you can rest assured that your customer's bulk beverage purchase will travel safely from your operation to its end destination.

BEV ON THE MOVE 96OZ DISPENSER

Item #071680 -25/PK



BEV ON THE MOVE 160oz

Item #071683 - 20CS



1 GALLON PLASTIC DAIRY JUG

Item #989702 - 48/CS

QUART DAIRY JUG 32OZ

Item #989714 - 180/CS

PLASTIC DAIRY JUG -SCREW ON LID

Item #900812 - 192/BAG





CARRYOUT / DELIVERY

TAKE OUT BAGS - PAPER

WHITE TWISTED HANDLE SHOPPING BAG –BISTRO
(10x7x12.5)

Item #011258 - 250/CS

BROWN FLAT HANDLE SHOPPING BAG (12x7x12)

Item #010125 - 250/BLD

WHITE TWISTED HANDLE SHOPPING BAG –SUPER
ROYAL (14x10x15.5)

Item #011230 - 200/CS

BROWN TWISTED HANDLE SHOPPING BAG – SUPER
ROYAL (14x10x15.5)

Item #011259 - 200/CS

BROWN TWISTED HANDLE SHOPPING BAG (10x9.75x10)

Item #010120 - 250/CS





CARRYOUT / DELIVERY

TAKE OUT BAGS - PLASTIC

21" WHITE WAVE POLY HANDLE BAG (21x18x10)
Item # 491081- 500/cs

CLEAR LO-DENSITY HEAVY POLY T-SHIRT BAG (12x7x23)
Item #010208 - 500/cs

WHITE LO-DENSITY HEAVY POLY T-SHIRT BAG (11.5x7x23)
Item #010203 - 500/cs

WHITE SQUARE BOTTOM T-SHIRT BAG (11.5x9.5x16x9.5)
Item #911916 - 500/cs

WHITE CLIP LOOP SHOPPING BAG WITH BOARD TOP & BOTTOM (12x10x14x10)
Item #010207 - 250/cs

ECO GREEN T-SHIRT BAG (11.75x7x22)
Item #912345 - 1000/cs



NON-WOVEN BAG

BLACK NON-WOVEN SHOPPING BAG (13x7x10)

These bags hold 9x9 containers and are a great option to paper and poly shopping bags.

Item# 130710 - 100/cs





CARRYOUT / DELIVERY

CATERING BOXES

Designed to serve all your restaurants takeout requirements, these carry out boxes feature corrugated construction, secure transport, and ventilation that will allow food to breathe while staying insulated.

CORRUGATED STEAMTABLE BOX FOR FULL PAN CATER BOX

Item #901586 - 50/CS



STEAMTABLE BOX FOR HALF PAN CATER BOX

Item #901587 - 50/CS

SMALL CATERING BOX (15-1/4x10-3/4x4-3/4)

Item #350631 - 15/CS

XLARGE CATERING BOX (23-9/16x13-1/4x4-3/4)

Item #350632 - 15/CS

LARGE CATERING BOX (17.75X12.25X4.5)

Item #985380 - 15/CS



DINE-IN RESTAURANT SERVICE

As some states and municipalities begin to slowly reopen, restaurants prepare to offer dine-in service to patrons*, with certain limitations, including but not limited to the following:

- All tabletop items, including condiments, must be sanitized after each table turns
- All front-of-house surfaces, including door handles, screens, phones, pens, keyboards and other areas of hand contact must be disinfected every two hours at a minimum
- Limited seating at each table
- Table spacing should be maintained so people sitting at adjacent tables are at least six feet apart
- Employees must wear facemasks

**Please check your local government guidelines for more detail on restaurant reopenings.*





IN HOUSE DINING

DISPOSABLE TABLE COVERS/ SETTINGS

DISPOSABLE PLACEMATS/ MENUS

Customized for your foodservice establishment, these placemats double as a menu, which would be disposed of after the meal.



Special Order Item - 1000/CS

DISPOSABLE TABLE TOP COVERS

Eliminate the need to change table linens after each customer and protect your dine-in customers by covering high touch surfaces with disposable table covers. Available in white, kraft, and black.

Acme Item #020245 - 24x32 white

Acme Item #020612 - 36x36 white

Acme Item #020622 - 30x30 white





IN HOUSE DINING

PLATE COVERS

- Improved Food Protection and Sanitation
- Increased Customer Confidence

***Available for Drop Ship**



COVERED GLASSWARE

- Improved Food Protection and Sanitation
- Customer Peace of Mind
- Also great for taking beverages on the go

***Available for Drop Ship**



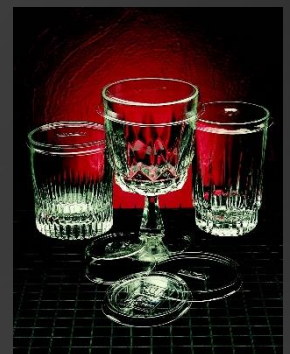
GLASS CAPS

100% recyclable PET and fitting most glasses, they insure that all beverages are protected from contaminants from pour to serve.

Plain, Embossed, or Color Printed

- Available in a Variety of Sizes from 51mm to 96mm
- Prevents Contaminants

***Available for Drop Ship**





IN HOUSE DINING

FACE MASKS

3 LAYER NONWOVEN FACE MASK:

- FDA certified
- Disposable

Acme Item #330573 - 2000/case



CLOTH FACE MASKS

- 3-layer 100% cotton soft jersey
- Dupont protective coating drastically increases protection
- Antimicrobial cloth controls bacterial growth and inhibits the growth of unpleasant odors
- Silicone finish limits liquid absorption
- Washable for repeat use (up to 40 washes)
- Individually packed and bagged
- Color: Black
- Custom logo available at additional cost



Item #330590 – 25 per pack



Thermometers

Infrared Forehead Thermometer

Features:

- Non-contact measurement, safer and healthier
- Measurement accuracy (human body temperature 35°C - 42°C): $\pm 0.2^{\circ}\text{C} / 0.4^{\circ}\text{F}$
- Quick temperature measurement, easy to operate
- High precision & infrared sensors, intelligent measurement
- Automatic shutdown without any operation within 30 seconds
- Suitable for children and adults



Specifications:

Measuring distance: 3 - 5cm

LCD resolution: $0.1^{\circ}\text{C} / 0.1^{\circ}\text{F}$

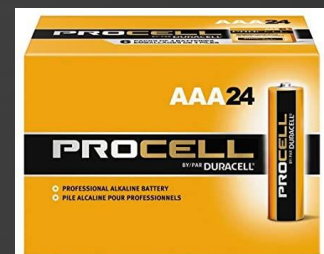
Measurement range: $32^{\circ}\text{C} - 42.9^{\circ}\text{C}$ ($89.6^{\circ}\text{F} - 109.2^{\circ}\text{F}$)

Need 2 x AAA batteries (not included)

Acme Item #930987

AAA Batteries

Acme Item #990098 -24/box





IN HOUSE DINING

PROTECTIVE SHIELDS

MOBILE BAR DIVIDERS

These clear dividers provide a barrier between individuals or small groups seated at the bar and are equipped with locking casters.

***Available for Drop Ship**



CASHIER/ HOSTESS SHIELDS

Customized to fit any cashier or hostess station, these clear, acrylic shields offers an aesthetically pleasing barrier to provide more protection for your employees and customers while completing a transaction .

***Available for Drop Ship**

****48 hour turnaround from time of order**





DISINFECTANTS

TruShot 2.0 Disinfectant Cleaner

A fast and effective one-step spray and wipe virucide and disinfectant.

Effective against a broad spectrum of bacteria, viruses, fungi and inhibits the growth of mold and mildew.

For virtually any hard, non-porous surfaces such as countertops, stainless steel, sinks, toilets, tubs, doorknobs, floors, walls and garbage cans.

No mixing required.

COVID-19 dwell time – 3 minutes

Item #511849 - Trigger Dispenser– Each



Item #511847 – Restroom Hard Surface Cleaner -4/case



Item #511850 – Multi-surface Disinfectant - 4/case



Item #511846 - Power Cleaner/Degreaser 4/case



Item #511848 – Glass Multi-Surface Cleaner 4/case





SANITIZERS

Fresh Gel Hand Sanitizer Packets

Quick, portable, convenient pouches that are easy to use anywhere! Each pouch contains 65% alcohol.

Acme Item #511384 - 400 pouches per case



Hand Sanitizer Wipes

Sanitizing Handwipe Towelette

Acme Item #453500 – 10 packs of 100; 1000 per case



Diamond Ready To Use (RTU) Sanitizer

No-rinse surface sanitizer for Institutional and Industrial Use:

- Schools
- Dairies
- Restaurants
- Food Handling and Process Areas
- Federally Inspected Meat & Poultry Plants
- Bars and Institutional Kitchens

Acme Item #512180 -12/32oz





HAND SANITIZER

Gel Hand Sanitizer

- 70% Alcohol
- Pumps included

Acme Item #511806 –Gallon -4/case



Aluminum Sanitizer Dispenser Stand

- Accepts dispensers up to 7” diameter with less than 2” diameter throat.
- 11” x 11” base. Footprint minimizes space required.
- Support mechanism stabilizes dispenser container and prevents it from being knocked off the stand or easily stolen.
- All Aluminum construction

Acme Item #972844 – 24” tall - each

Acme Item #972936 -36” tall - each





FACILITY ITEMS

Hands Free Door Openers

Minimize the chance of spreading germs from potentially contaminated door handles.

- Stainless-steel construction for lasting strength and appearance, even in high-traffic applications.
- Versatile – can be placed almost anywhere.
- Easy to install; hardware included.



Acme Item #939811 – Forearm Unit – each

Acme Item# 939813 – Foot Unit - each

Stanchion Sign Systems

- Heavy, sturdy base with 34" high post and 6-1/2 ft long retractable belt (overall 35-1/2"H)
- Stanchions must be purchased in multiples of two (2)
- Interchangeable frame signs
- Available in black and stainless steel

***Available via drop ship only**





FACILITY ITEMS

Mobile Handwashing Stations

This is a portable, self-contained, electric hand washing system that will run hot and cold water for up to 70 hand washings. The unit includes double stainless-steel sinks, two each 5 gallon fresh water tanks, two each 7 1/2 gallon waste water bins, hand soap dispenser, and paper roll holder. Use with a 110V electrical source.



*Available via drop ship only

Social Distance Compliance Signs

Help customers maintain social distance and meet local safety standards and requirements with Social Compliance Signs.

- Bold 6x9" signs are easy to read
- Self adhesive back for easy hanging/placement

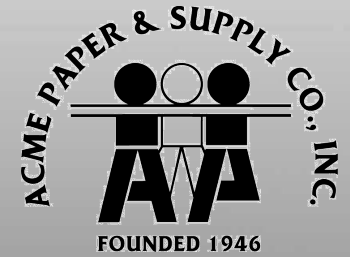
*Special Order – 5 day Lead Time

*Available via Drop Ship





Barriers for every Industry



(800) 462-5812

| www.acmepaper.com

| info@acmepaper.com



(800) 462-5812

| www.acmepaper.com

| info@acmepaper.com

HAND HYGIENE REGIMEN FOR HANDWASHING

1



Wet hands under warm running water. Leave water running.

2



Dispense soap.

3



Rub hands palm to palm.

4



Rub right palm over top of left hand with interlaced fingers. Repeat with left palm over top of right hand.

5



Rub palms together with fingers interlaced.

6



Rub backs of fingers to opposing palms with fingers interlocked.

7



Rotate rubbing the left thumb clasped in the right palm. Repeat with right thumb clasped in the left palm.

8



Rotate rubbing, backwards and forwards with clasped fingers of your right hand in your left palm. Repeat with left hand in right palm.

9



Rinse hands thoroughly with running water.

10

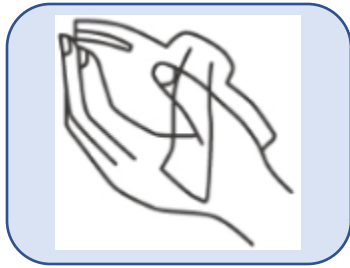


Dry with clean paper towels. Turn water off using a towel. The total process should take approximately 40-60 seconds.



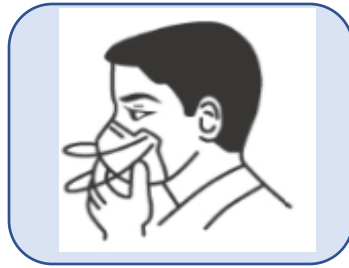
HOW TO PROPERLY WEAR A FACE MASK

WEARING THE FACE MASK



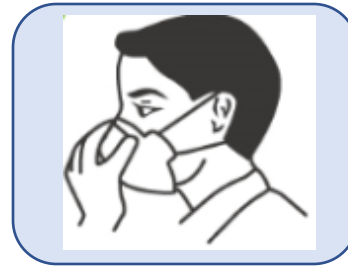
1

Clean your hands with soap and water or hand sanitizer, then remove a mask from the box. Make sure there are no obvious tears or holes in either side of the mask.



2

Keep the white side towards your face with the nose clip, or stiff bendable edge at the top.



3

Hold the mask by the ear loops and place a loop around each ear.

***See below if your mask has ties or bands.*



4

Press the nose clip to the shape of your nose and pull the bottom of the mask over your mouth and chin.

- Face masks with ties - Bring the mask to your nose level and place the ties over the crown of your head and secure with a bow.
- Face Mask with Bands - Hold the mask in your hand with the nosepiece or top of the mask at fingertips, allowing the headbands to hang freely below hands. Bring the mask to your nose level and pull the top strap over your head so that it rests over the crown of your head. Pull the bottom strap over your head so that it rests at the nape of your neck.

REMOVING THE FACE MASK

- Clean your hands with soap and water or hand sanitizer before touching the mask. Avoid touching the front of the mask to avoid contamination. Only touch the ear loops/ties/band.
- Follow the instructions below for the type of mask you are using
 - Face Mask with Ear loops: Hold both of the ear loops and gently lift and remove the mask.
 - Face Mask with Ties: Untie the bottom bow first then untie the top bow and pull the mask away from you as the ties are loosened.
 - Face Mask with Bands: Lift the bottom strap over your head first then pull the top strap over your head.
- Throw the mask in the trash. Clean your hands with soap and water or hand sanitizer.

HAND HYGIENE REGIMEN FOR SANITIZING

1



Place enough product in your palm to thoroughly cover your hands.

2



Rub hands palm to palm.

3



Rub right palm over top of left hand with interlaced fingers. Repeat with left palm over top of right hand.

4



Rub palms together with fingers interlaced.

5



Rub backs of fingers to opposing palms with fingers interlocked.

6



Rotate rubbing the left thumb clapsed in the right palm. Repeat with right thumb clapsed in the left palm.

7



Rotate rubbing backwards and forwards with clapsed fingers of your right hand in your left palm. Repeat with fingers of your left hand in your right palm.

8



The total process should take approximately 20 seconds. Once your hands are dry they are safe for caring for patients.

